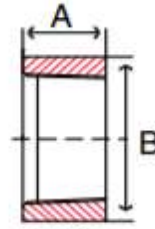




Half Coupling - 150#
304 Stainless Steel
Inches / Pounds



Part #	Nominal Pipe Size	(A) Coupling Length	(B) Coupling Outside Diameter	Threads per Inch	Approximate Weight Each
PFDAHC0.125S	1/8	0.430	0.550	27	0.02
PFDAHC0.25S	1/4	0.510	0.730	18	0.03
PFDAHC0.375S	3/8	0.550	0.850	18	0.03
PFDAHC0.5S	1/2	0.710	1.050	14	0.09
PFDAHC0.75S	3/4	0.770	1.250	14	0.09
PFDAHC1S	1	0.830	1.560	11-1/2	0.18
PFDAHC1.25S	1 1/4	0.940	1.910	11-1/2	0.24
PFDAHC1.5S	1 1/2	0.940	2.170	11-1/2	0.31
PFDAHC2S	2	1.100	2.620	11-1/2	0.44
PFDAHC2.5S	2 1/2	1.300	3.330	8	1.01
PFDAHC3S	3	1.420	3.960	8	1.37
PFDAHC4S	4	1.650	5.100	8	2.56
PFDAHC6S	6	1.970	7.060	8	3.95

***304 Stainless Steel Couplings meet the following casting specifications: ASTM A351 ACI Grade CF8 (304)**

***NPT threads conform to ASME B1.20.1**

***Manufacturing facility is ISO 9001:2008 Certified**

***One End NPT Internal Threaded, Opposite End Butt Weld**